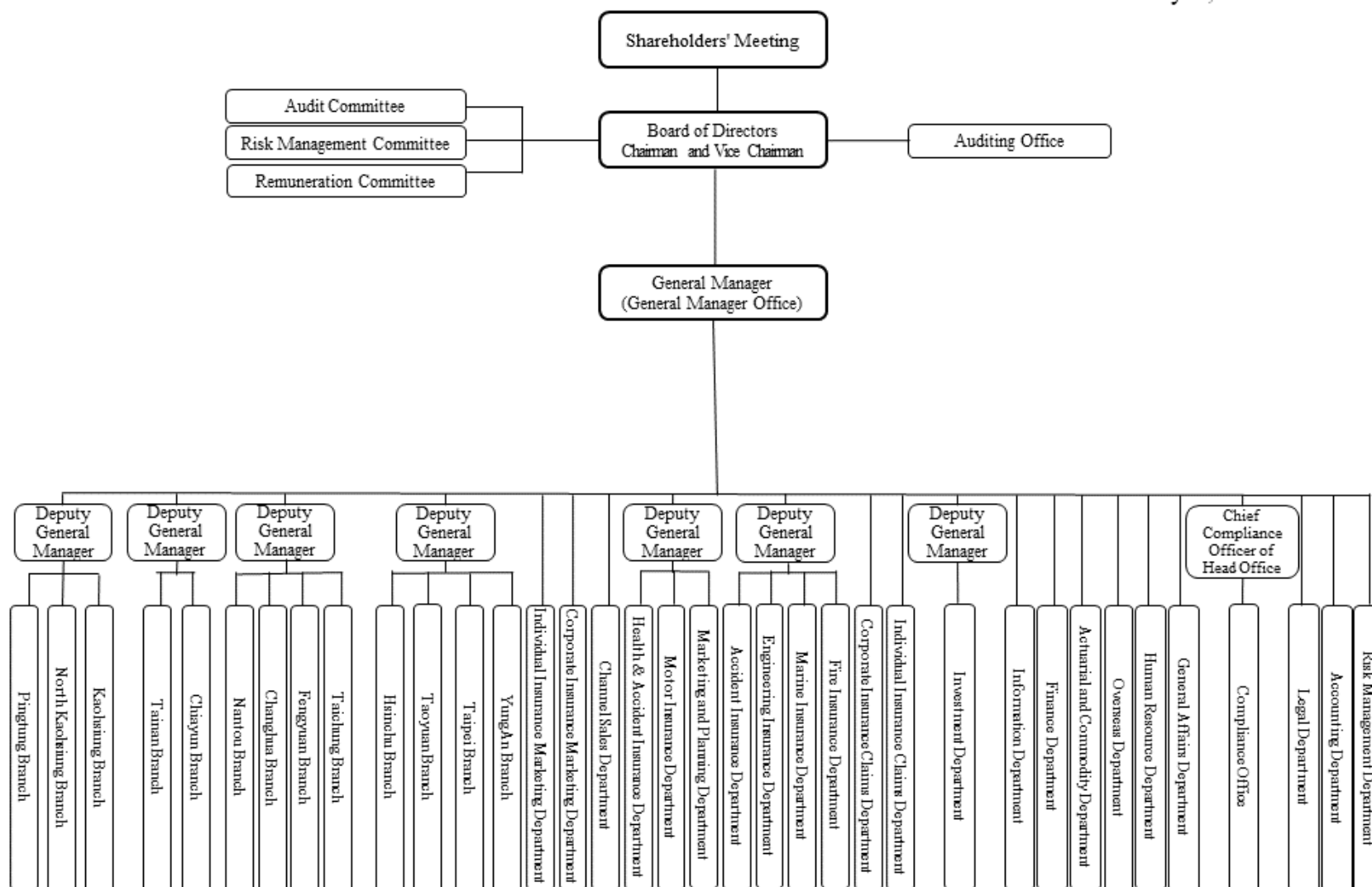


(I) Organizational Chart

January 1, 2024



## Directors and Supervisors (I)

Position	Nationality/ Place of Registration	Name	Gender and Age	Date Elected	Term of Office	Date First Elected	Shareholding When Elected		Current Shareholding		Spouse & Minor Shareholding		Shareholding by Nominees		Major Experience (Education)	Other Position Concurrently Held at the Company and Other Companies	Executives, Directors or Supervisors who Are Spouses or within the Second Degree of Kinship			Note
							Number of Shares	Shareholding Ratio	Number of Shares	Shareholding Ratio	Number of Shares	Shareholding Ratio	Number of Shares	Shareholding Ratio			Position	Name	Relationship	
Chairman	R.O.C.	Want Want Co., Ltd.	- -	2022.06.24	Three years	2007.11.19	46,689,943	20.88%	46,689,943	20.88%	0	0.00%	0	0.00%	None	None	None	None	None	None
	R.O.C. & Australia	Representative: Chi-Hsiung Hung	Male 71~80	2022.06.24	Three years	2010.10.29	0	0.00%	0	0.00%	0	0.00%	0	0.00%	Department of Law, National Chung Hsing University	None	Corporate Insurance Claims Department Assistant Vice President	Kuo-Chun Hung	Father and son	None
Director	R.O.C.	Want Want Co., Ltd.	- -	2022.06.24	Three years	2007.11.19	46,689,943	20.88%	46,689,943	20.88%	0	0.00%	0	0.00%	None	None	None	None	None	None
	R.O.C.	Representative: Hai-Lun Xu	Female 51~60	2022.06.24	Three years	2011.08.01	0	0.0%	0	0.00%	0	0.00%	0	0.00%	Master, Department of Business Management, Royal Roads University	(Note 2)	None	None	None	None
Director	R.O.C.	Want Want Co., Ltd.	- -	2022.06.24	Three years	2007.11.19	46,689,943	20.88%	46,689,943	20.88%	0	0.00%	0	0.00%	None	None	None	None	None	None
	R.O.C.	Representative: Ching-I Lu	Female 41~50	2023.07.17	Three years	2023.07.17	0	0.00%	0	0.00%	0	0.00%	0	0.00%	Master of Management, London School of Political Economy, U.K.	Deputy General Manager, Twitcher Taiwan Limited, Taiwan Branch (B.V.I) and Representative, Qi Chen Management Consulting Co., Ltd.	None	None	None	None
Director	R.O.C.	Want Want Co., Ltd.	- -	2022.06.24	Three years	2007.11.19	46,689,943	20.88%	46,689,943	20.88%	0	0.00%	0	0.00%	None	None	None	None	None	None
	R.O.C.	Representative: Chia-Ying Ma	Male 61~70	2022.06.24	Three years	2013.07.01	0	0.00%	0	0.00%	0	0.00%	0	0.00%	PhD in Business and Economics, Lehihg University	(Note 3)	None	None	None	None
Director	R.O.C.	Want Want Co., Ltd.	- -	2022.06.24	Three years	2007.11.19	46,689,943	20.88%	46,689,943	20.88%	0	0.00%	0	0.00%	None	None	None	None	None	None
	R.O.C.	Representative: Yung-Tsung Hung	Male 51~60	2022.06.24	Three years	2022.06.24	0	0.00%	0	0.00%	0	0.00%	0	0.00%	Master of the Institute of Finance, National Central University	Senior Deputy General Manager, Twitcher Taiwan Limited, Taiwan Branch (B.V.I) and Director, OCEAN PLASTICS CO., LTD.	None	None	None	None

Position	Nationality/ Place of Registration	Name	Gender and Age	Date Elected	Term of Office	Date First Elected	Shareholding When Elected		Current Shareholding		Spouse & Minor Shareholding		Shareholding by Nominees		Major Experience (Education)	Other Position Concurrently Held at the Company and Other Companies	Executives, Directors or Supervisors who Are Spouses or within the Second Degree of Kinship			Note
							Number of Shares	Shareholding Ratio	Number of Shares	Shareholding Ratio	Number of Shares	Shareholding Ratio	Number of Shares	Shareholding Ratio			Position	Name	Relationship	
Director	R.O.C.	Want Want Co., Ltd.	- -	2022.06.24	Three years	2007.11.19	46,689,943	20.88%	46,689,943	20.88%	0	0.00%	0	0.00%	None	None	None	None	None	None
	R.O.C.	Representative: Zi-Ming Liu	Male 61~70	2022.06.24	Three years	2018.02.27	6,265	0.00%	6,265	0.00%	0	0.00%	0	0.00%	Department of Mechanical Engineering, National Chin Yi University of Technology	General Manager of the Company	None	None	None	None
Independent Director	R.O.C.	Dong-Liang Wang	Male 61~70	2022.06.24	Three years	2019.06.18	0	0.00%	0	0.00%	0	0.00%	0	0.00%	Master of Law, Institute of Law, Chinese Culture University	Director of Dong-Liang Wang Law Firm	None	None	None	None
Independent Director	R.O.C.	Huang-Chi Liu	Male 51~60	2022.06.24	Three years	2022.06.24	0	0.00%	0	0.00%	0	0.00%	0	0.00%	Master of Law, Institute of Law, Tunghai University	(Note 4)	None	None	None	None
Independent Director	R.O.C.	Yu-Fung Ma	Male 61~70	2022.06.24	Three years	2016.06.24	0	0.00%	0	0.00%	0	0.00%	0	0.00%	PhD, Department of Business Management, National Taipei University	(Note 5)	None	None	None	None

Note 1: It is based on the data of employment as of April 30, 2024.

Note 2: Ms. Hai-Lun Xu holds the position of director in [Yen-Ming Tsai Charity Foundation, Want Want Cultural and Educational Foundation, Want-Tai Cross-Strait Mutual Trust Foundation and CTV Charities Aid Foundation].

Note 3: Mr. Chia-Ying Ma is the independent director of [TSC AUTO ID TECHNOLOGY CO., LTD., MEDEON BIODESIGN, INC., RICHWAVE TECHNOLOGY CORP. and HIYES INTERNATIONAL CO., LTD.], director of [Shih-Jen Wen Culture and Education Foundation, China Central Investment Co., Ltd., Xinyutai Co., Ltd.], supervisor of Zhongwei Development Center and Small and Medium Enterprise Credit Guarantee Fund of Taiwan, Professor of Soochow University.

Note 4: Mr. Huang-Chi Liu is the Chairman of Wanze Company Ltd. and Jingpin Development Industries Corporation, the Vice Chairman of Long Bon International Co., Ltd., an independent director of Mayer Steel Pipe Corp. and CHUN YUAN STEEL INDUSTRY CO., LTD., a director of [Eastern Home Shopping & Leisure Co., Ltd., Eastern E-Commerce Co., Ltd., ET New Media Holding Co., Ltd., Care Pet Bio-Tech Company, Taisun Enterprise Co., Ltd., Sheng Cheng Co., Ltd. and Lian Teh Industrial Development Foundation], supervisor of Suneast Engineering and Development Co., and Presiding Lawyer of Authenticity Attorneys-at-Law.

Note 5: Mr. Yu-Fung Ma serves as an independent director of PRINCETON TECHNOLOGY CORP., a supervisor of [Black Dragon Management Consulting Corp. and Black Dragon Technology Corporation], a member of the Remuneration Committee of China Television Company and an assistant professor of Shih Chien University.

Note 6: In case that the Chairman and the General Manager or their equivalents (top manager) are assumed concurrently by the same person, or two persons who are spouses or relatives within 1 degree of kinship, the reason, rationality, necessity and corresponding measures (such as increasing the number of Independent Directors, and more than half of the Directors not concurrently serving as employees or managers) should be described: None.

**Table 1. Major shareholders of corporate shareholders:**

April 30, 2024

Name of Corporate Shareholder (Note 1)	Major Shareholders of Corporate Shareholders (Note 2)
Want Want Co., Ltd.	Yen-Ming Tsai 70.364%, Yu-Man Peng 16.224%, Chung-Chung Tsai 6.818%, Wang-Chia Tsai 6.594%

Note 1: For Directors and Supervisors who are the representatives of corporate shareholders, the names of the corporate shareholders shall be disclosed.  
Note 2: Please specify names of the major shareholders of the given corporate shareholder (top ten shareholders) and the ratio of shareholding. Where the major shareholder is a corporation, please complete the following Table 2.

**Table 2. Major Shareholders of Institutional Shareholders with Corporations as Their Major Shareholders**

April 30, 2024

Name of Corporate Shareholder (Note 1)	Major Shareholders of Corporate Shareholders (Note 2)
N/A	-

Note 1: If the major shareholder in Table 1 above is a corporation, the name of the corporation should be entered.  
Note 2: Please specify names of the major shareholders of the given corporate shareholder (top ten shareholders) and the ratio of shareholding.